

BD -05T Series - Double-head Diaphragm Pump

Model:BD-05T011088

Performance Data	
Model	BD-05T011088
Voltage range	1V~4V (Normal Voltage: 3.3V)
Maximum flow rate (3.3V)	1088ml/min
Maximum negative pressure	-47KPa
Maximum positive pressure	44KPa
Motor Data	
Motor type	Brushed motor
Max power	0.7w
Waterproof lever	IP40
Physical Properties	
Storage temperature	-40℃~60℃
Operating environment	-20℃~45℃
Material	
Pump Head	PPS
Diaphragm/Valve	EPDM Customized FKM
Pump body	Nylon
Dimension	36*34*14mm
Weight	25g



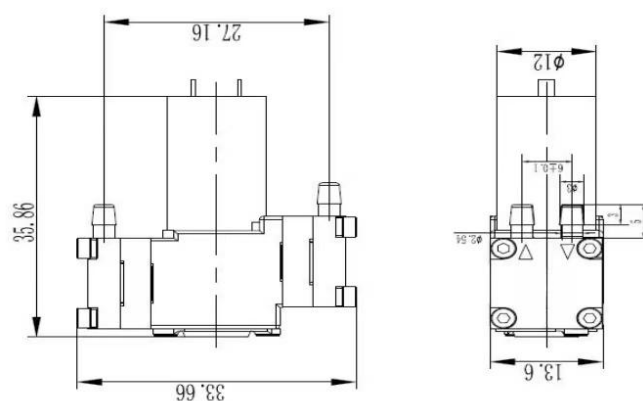
Features

Optimized pump body to ensure small volume, provide large flow and maintain relatively low power consumption.

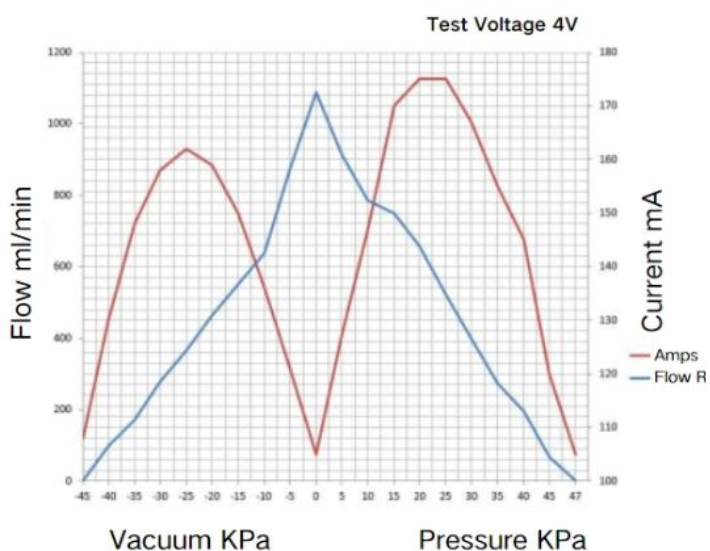
The gas flow is stable and the motor runs in a wide range.

- Low leakage rate and pollution-free sample gas
- Long lifetime: 6000-8000hours

Drawing(mm)



Curve



Application fields

CEMS
Handheld Instruments
Analysis Instrument
Medical Device
Food Processing
Environmental Protection
Automatic Production Line Robot