

# BD - 05TR Series - Micro Piston Pump

## Model: BD-05TR32L

Performance Data	
Model( for Standard)	BD-05TR32L
Voltage Range	12/24V
In parallel connection	Flow: 32L/min Negative pressure:-85kPa
In series connection	Flow: 17L/min Negative pressure: -98kPa
Max Positive Pressure	8-10Bar ( But the pump has almost no flow at 10bar)
Motor Data	
Motor Type	High-end DC brushed motor
Max power	150W
Waterproof Lever	IP00
Physical Properties	
Storage temperature	-40℃~60℃
Medium temperature	-10℃~45℃
Material	
Inlet and outlet	G1/8
Head of pump	Aluminum alloy
Valve	Stainless steel
Piston cup	PTFE
Pump body	Aluminum alloy
Dimension(mm)	185*63*105mm
Weight	2063g



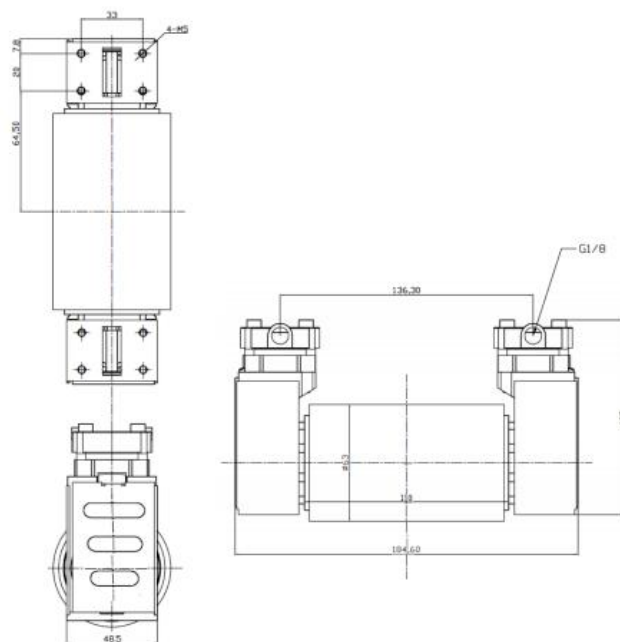
### Features

Optimized pump body to ensure small volume, provide large flow and maintain relatively low power consumption.

The gas flow is stable and the motor runs in a wide range.

- High performance, smart volume and high pressure
- Maximum output pressure of 10kgs
- Long lifetime:Dc brushed motor: 6000-8000 hours
- Pollution-free sample gas

### Drawing(mm)



### Curve

In parallel connection (float flowmeter)

