

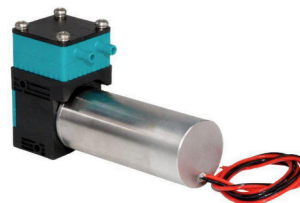
# BD - 05TF Series - Micro Diaphragm Gas-Liquid Pump

## Model:BD-05TF600WB

Performance Data	
Model	BD-05TF600WB
Voltage Option	6V/12/24V
Free Water Flow	600mL/min
Max Water Pressure	2.5bar
Water Pressure Head	>15m
Water Suction Head	7m
Free Gas Flow	4L/min
Max Gas Pressure	1bar
Max Gas Vacuum	-60kPa
Motor Data	
Motor Type	DC Brushless Motor
Max Power	7W
Physical Properties	
Ambient Temperature	5°C~40°C
Fluid Temperature	10°C~60°C
Material/Other	
Hose Suggest	ID4mm, OD6mm
Head of pump	PA66
Diaphragm	EPDM
Valve	EPDM
Wet Material	PA+EPDM+EPDM
Noise	55dB
Lifetime	10000H
Dimension	94x31.1x58.1mm
Weight	240g

### Installation & Usage Notes

- 1.Install a filter with a minimum filtration accuracy of  $\leq 30 \mu\text{m}$  at the pump inlet to prevent particle ingress
- 2.Bottom mounting: 4x $\Phi 2.4$  mm holes (depth 6.8 mm), recommended to use M3 self-tapping screws for through-board fixation
- 3.Side mounting: 2xR1.7 mm through holes, use M3 screws for through-board installation and secure fixation
- 4.Wiring Definition: Red wire (+) positive, black wire (-) negative



### Features

Oil-free, self-priming, gas-liquid compatible, low noise, dry-running capable, compact size, low vibration, long service life.

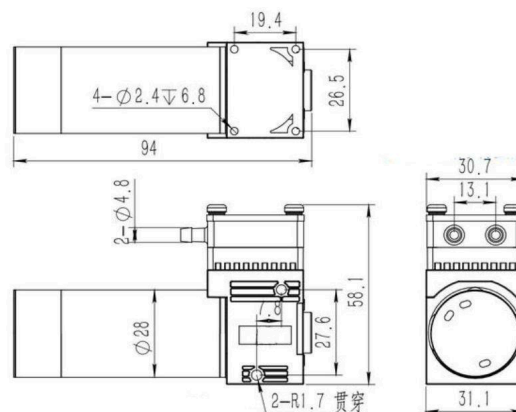
### Principle

Driven by a motor, the diaphragm reciprocates to create suction and discharge cycles through check valves for stable gas and liquid transfer. Chemical resistance.

### Chemical Resistance

Customizable PPS pump head, PTFE diaphragm, and FFPM valves provide excellent resistance to corrosive gases and liquids.

### Drawing(mm)



### Application Fields

- Digital printing equipment
- Biochemical analyzers
- Microplate washing equipment
- Chemical analysis systems
- Liquid sampling devices
- Cleaning & Disinfection