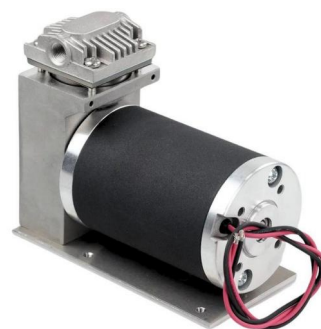


BD - 05T Series - Swing Piston Air Pump

Model:BD-05TR15L

Performance Data	
Model	BD-05TR15L
Voltage	24V
Max Flow	15L/min
Max Vacuum	-90kPa
Max Pressure	7bar
Motor Data	
Motor Type	High-end brush motor
Max load current	2.6A
Power	65W
Physical Properties	
Operating ambient temperature	-20°C~60°C
Operating medium temperature	+5°C~40°C
Material	
Head of pump	Aluminum alloy
Piston Cup	PTFE
Valve	FPM
Dimension	129*65*107mm
Weight	1.6kg



Features

Working Principle

Based on the positive displacement wobble piston principle. An eccentric drive causes the piston to wobble, while check valves control the suction and discharge of gases or liquids.

Reliability

Oil-free design with dry-running capability for reliable operation under demanding working conditions.

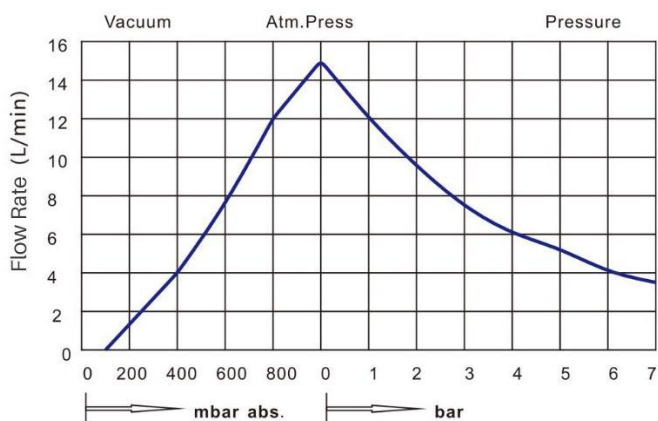
Chemical Resistance

Available with PTFE, FPM, and other wetted material options, suitable for neutral and corrosive gases.

Low Noise & Vibration

Optimized low-noise and low-vibration structure for smooth and stable operation.

Curve



Drawing(mm)

